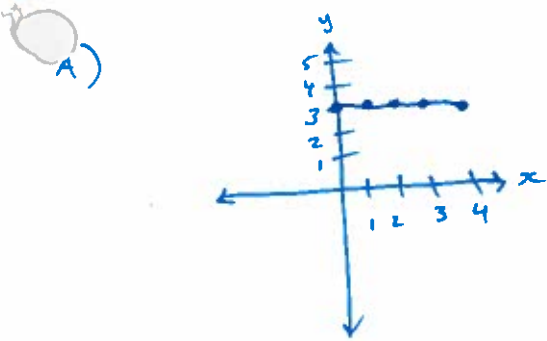
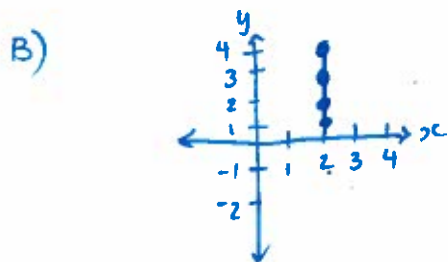


C: Graphing Linear Relations Continued

Horizontal and Vertical Lines



$y = 3$ * For every x value $y = 3$.



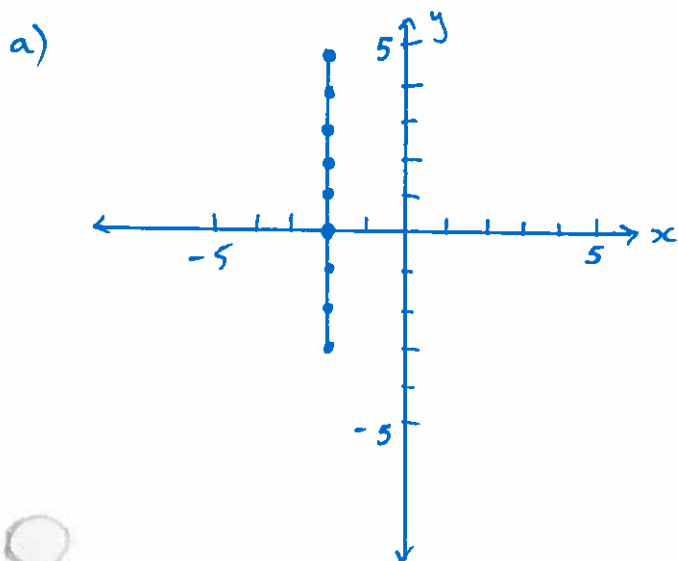
$x = 2$ * For every y value $x = 2$.

→ Horizontal lines are $y = \text{some number}$.

→ Vertical lines are $x = \text{some number}$.

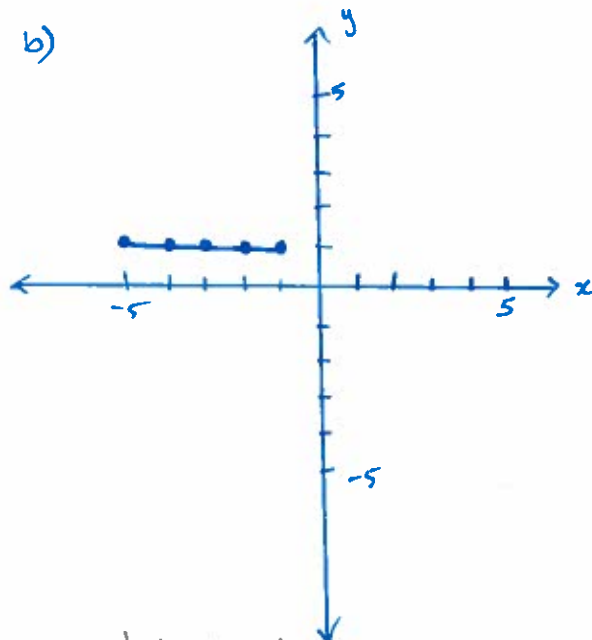
Example:

1. What linear equation does each graph represent?



* Vertical $\therefore x =$

$x = -2$



* horizontal $\therefore y =$

$y = 1$

Assignment Pg. 240 # 7a, 11b, 12c