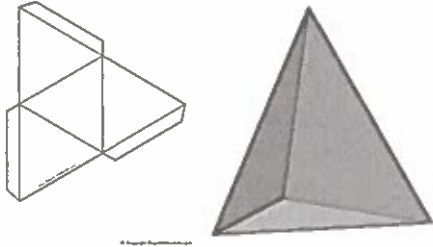


B: Nets of Three – Dimensional Objects

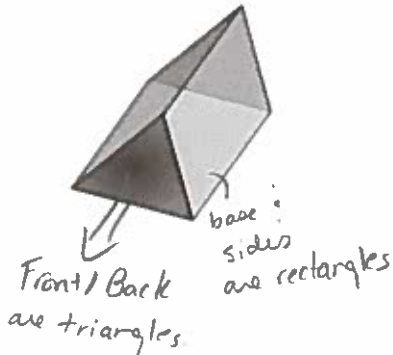
Net: a two dimensional shape that, when folded encloses a 3 – D object.

Tetrahedron

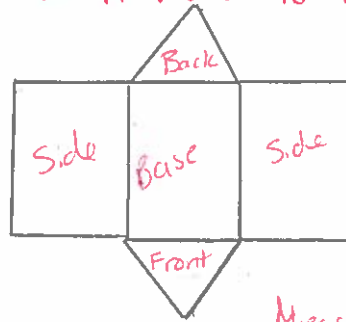


Examples:

1. Sketch a net for the object.



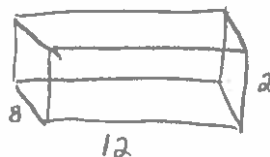
Sketch what the 3D figure would look like if it were to be "unfolded".



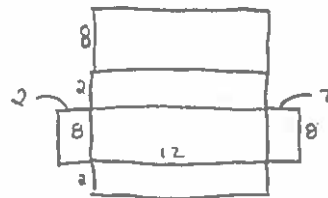
Measurements are not necessary but use a ruler.

2. Draw a net on grid paper for a rectangular prism with the following measurements: length is 12 units, width is 8 units, and height is two units.

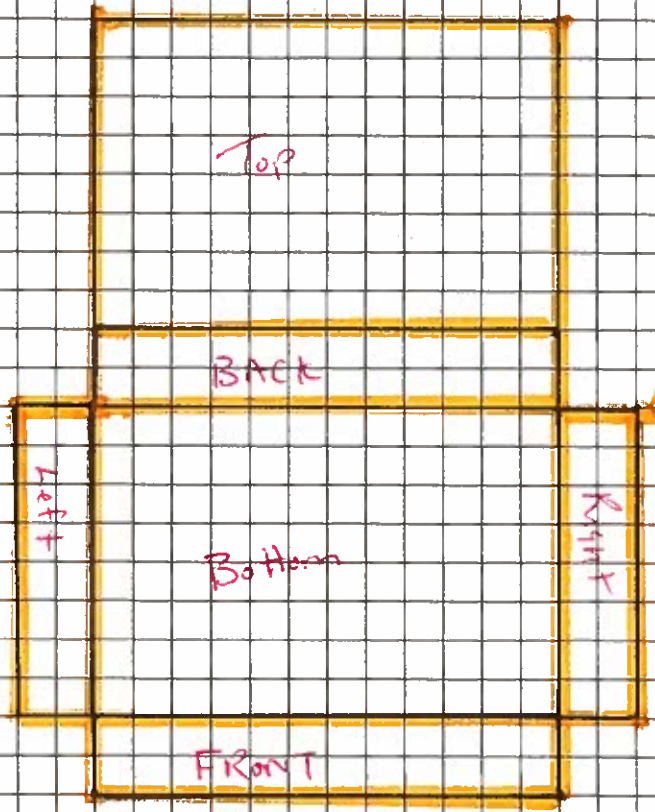
Sketch 3D rectangular prism.



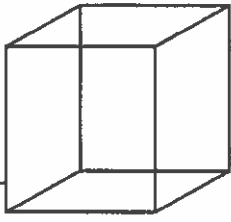
* If you need to sketch net.



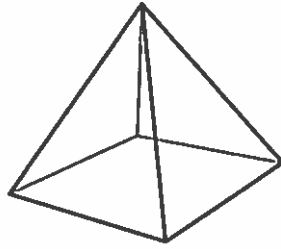
See next page for grid paper!



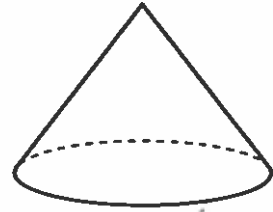
3. Match the solid to its net.



Cube



square based pyramid



cone

